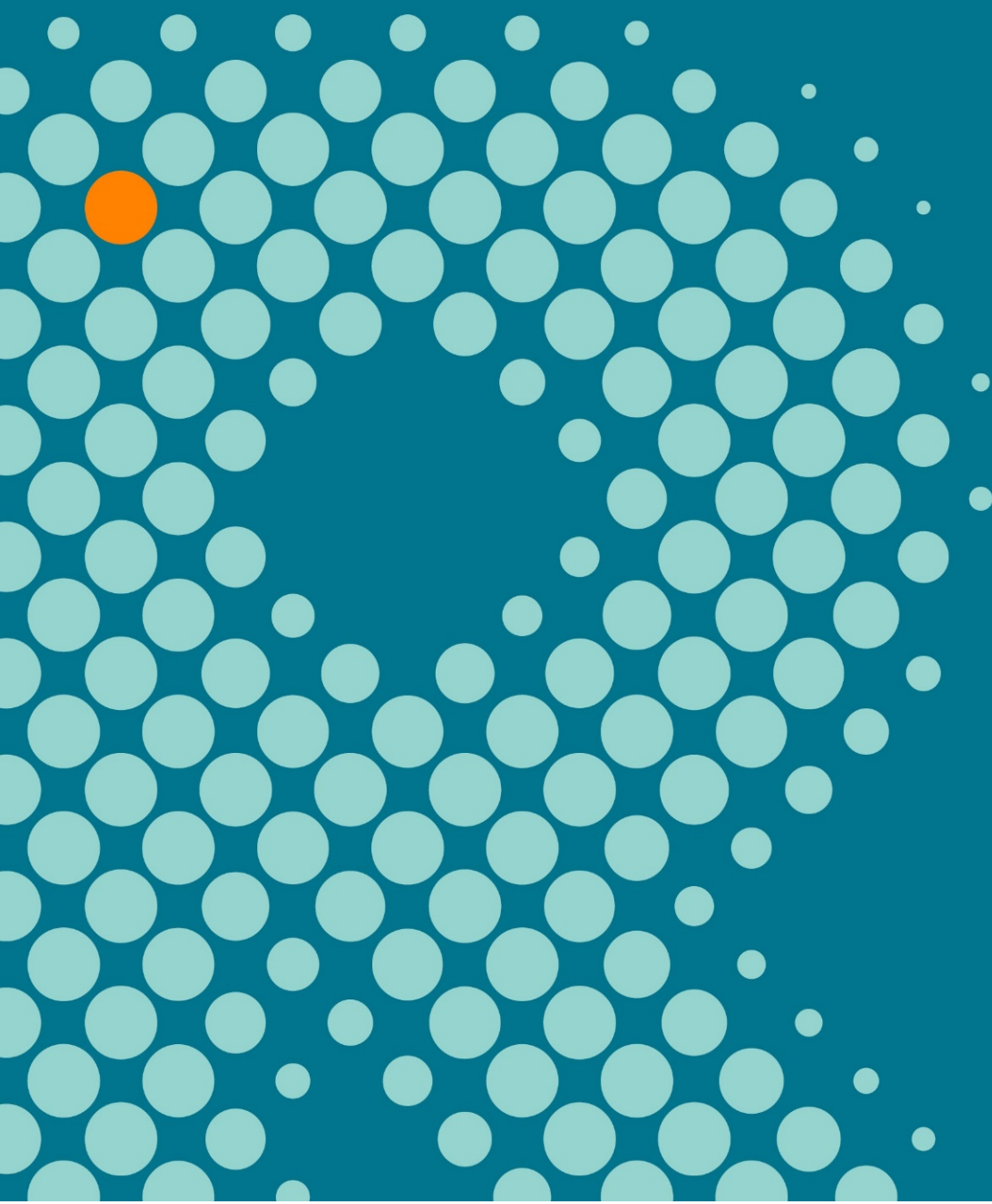


Nomenclature and Acknowledgements

The Raine Study



Nomenclature:

When referring to the Raine Study

Whenever the Raine Study is mentioned please refer to it as “The Raine Study” (in headings and at the start of a sentence) or “the Raine Study” when in the middle of a sentence.

Example

- *“Participants of the Raine Study Gen2...”*

“Raine” and “Study” should be preceded by “the” and kept together to remain a searchable phrase, with capitalisation of both words (Raine and Study)

The term ‘Western Australian Pregnancy (Raine) Study’ has been superseded and should not be used now.

When referring to the Raine Study participants

- Refer to “participants” and NOT to “subjects” or “patients”

Example:

- *“Potential participants were contacted by xxxx.”*

When referring to a particular generation: the Raine Study [Gen]

The Raine Study has become a multigenerational study. The following nomenclature has been adopted to differentiate the different generations (Gen) of participants.

Gen0 participants	Grandparents of the Gen2 participants / Parents of the Gen1
Gen1	Mothers and partners originally recruited into the Raine Study
Gen2	The Raine Study participants (previously sometimes called “the kids”)
Gen3	Offspring of the Gen2 participants

Examples:

- *“The Raine Study Gen1 participants”*
- *“The participants from both Gen1 and Gen2 were contacted.... “*

When referring to a particular follow-up: the Raine Study [Gen]-[period/follow-up]

The Raine Study has multiple waves of data collection (i.e. follow-ups), which are differentiated by a number that refers to the average age of the index participants

(Gen2) at the time of the study (e.g. Gen1-26 year follow-up refers to a follow-up undertaken on the parents when the index participants were 26 years old).

Antenatal data collected before the birth of Gen2

Perinatal data collected at the time of Gen2 birth

1 data collection at around the first birthday of Gen2

27 data collection at around the 27th birthday of Gen2

Examples:

- *“The Raine Study Gen1 and Gen2 antenatal data examined in this paper includes maternal exercise and fetal length at 18 weeks gestation.”*
- *“The Raine Study Gen2-1 follow-up assessment consisted of”*
- *“The Raine Study Gen1-26 year follow-up included assessment of”*
- *“Data collected at the Raine Study Gen2-27 year follow-up included”*

When referring to a particular focus within a single follow-up: investigation of [focus] in the [Gen]-[period/follow-up] of the Raine Study or investigation of [focus] in the Raine Study [Gen] at the [period/follow-up]

Examples:

- *“Investigation of eye health in the Gen2-20 year follow-up of the Raine Study...”*
- *“Investigation of cardiac risk in the Raine Study Gen2 participants at the 5 year follow-up...”*
- *“A key conclusion drawn from the investigation of bone density in participants of the Gen2-20 year follow-up of the Raine Study is that fat mass is less important for males than females.”*

When referring to a particular focus across several follow-ups: [design] investigation of [focus] in the [Gen] of the Raine Study

Examples:

- *“Longitudinal investigation of mental health in the Gen2 of the Raine Study, intergenerational investigation on obesity involving participants from Gen1 and Gen2 of the Raine Study.”*
- *“This paper presents findings from the longitudinal investigation of mental health in the Gen2 of the Raine Study.”*

Examples of what **NOT** to be used:

RAINE study, Raine pregnancy cohort, Raine birth cohort, Raine Sedentary Behaviour Study, Raine Intergenerational Asthma Study, Raine Longitudinal Back Pain Study

Acknowledgements:

The following groups are to be included in all acknowledgements:

- The Raine Study participants and their families.
- The Raine Study team for cohort co-ordination and data collection.
- The NHMRC for their long term contribution to funding the study over the last 30 years (unless individual NHMRC grants are acknowledged).

The following Institutions must be included in all acknowledgements for providing funding for core management of the Raine Study

- The University of Western Australia
- Curtin University
- Women and Infants Research Foundation
- Telethon Kids Institute
- Edith Cowan University
- Murdoch University
- The University of Notre Dame Australia
- The Raine Medical Research Foundation

If data from a particular follow-up are utilised the following specific funding bodies must be acknowledged:

The Raine Study Gen1- and Gen2-antenatal and perinatal data collections

- The Raine Medical Research Foundation

Maternal blood samples during pregnancy or cord blood

- NHMRC
- Women and Infants Research Foundation

The Raine Study Gen1- and Gen2-1, 2, 3, 5, 8, 10 year follow-ups

- NHMRC
- The Raine Medical Research Foundation

The Raine Study Gen2-14 year follow-up

- NHMRC (Sly et al, ID 211912)
- NHMRC Program Grant (Stanley et al, ID 003209)
- The Raine Medical Research Foundation

Biological specimens from the Gen2-14 year follow-up

- NHMRC (Beilin et al, ID 403981)

Spinal pain, posture data from the Gen2-14 year follow-up

- NHMRC (Straker et al, ID 323200)

DNA or GWAS data from the Gen2-14 year follow-up

- NHMRC (Palmer et al, ID 572613)
- NHMRC (Beilin et al, ID 403981)

Menstruation data from the PCOS sub-study

- NHMRC (Hickey et al, 403968)

The Raine Study Gen2-17 year follow-up

- NHMRC Program Grant (Stanley et al, ID 353514)

Biological specimens from the Gen2-17 year follow-up

- NHMRC (Beilin et al, ID 403981)

Cogstate and Functional MRI data

- NHMRC (Foster et al, ID 458623)

Spinal pain, posture data from the Gen2-17 year follow-up

- NHMRC (Straker et al, ID 323200)

Basal HPA axis data Gen2-17 year follow-up

- NHMRC (Foster et al, ID 458623)
- Canadian Institutes of Health Research - CIHR (Lye et al, MOP-82893)

DNA or GWAS data from Gen2-17 year follow-up

- NHMRC (Palmer et al, ID 572613)
- NHMRC (Beilin et al, ID 403981)
- NHMRC (Huang et al, ID 1059711)
- Canadian Institutes of Health Research - CIHR (Lye et al, MOP-82893)

The Raine Study Gen2-18 year sub-study

Trier Social Stress Test data from the Gen2-18 year sub-study

- Canadian Institutes of Health Research - CIHR (Lye et al, MOP-82893)

The Raine Study Gen2-20 year follow-up

Non alcoholic liver disease data

- NHMRC (Adams et al, ID634445)

Risky behaviour data

- NHMRC (Skinner et al, ID634509)

DXA scan data

- Canadian Institutes of Health Research - CIHR (Lye et al, MOP-82893)

Eye data

- NHMRC (Mackey et al, ID 1021105)
- Canadian Institutes of Health Research - CIHR (Lye et al)
- Lions Eye Institute
- Australian Foundation for the Prevention of Blindness
- Alcon Research Institute
- Telethon
- Ophthalmic Research Institute of Australia

Male fertility data from the sub-study

- NHMRC (Hart et al, ID 634457)

Example for study using Gen2-20 year follow-up data:

We are grateful to the Raine Study participants and their families and we thank the Raine Study and Lions Eye Institute research staff for cohort coordination and data

collection. The core management of the Raine Study is funded by The University of Western Australia, Curtin University, Telethon Kids Institute, Women and Infants Research Foundation, Edith Cowan University, Murdoch University, The University of Notre Dame Australia and the Raine Medical Research Foundation. The eye data collection of the Gen2-20 year follow-up of the Raine Study was funded by NHMRC Grant 1021105, Ophthalmic Research Institute of Australia (ORIA), Alcon Research Institute, Lions Eye Institute and the Australian Foundation for the Prevention of Blindness. The NHMRC project grant 1022134 funded the serum 25(OH)D assays that were conducted by RDDT in Melbourne Victoria, Australia.

The Raine Study Gen2-22 year follow-up

- The Centre for Sleep Science, School of Anatomy, Physiology & Human Biology, the University of Western Australia

Asthma data

- NHMRC (Hall et al, ID 1021858)

Sleep data

- NHMRC (Eastwood et al, ID 1027449)

Sedentary behavior and physical activity data

- NHMRC (Straker et al, ID 1044840)

Work data

- Safe Work Australia

Blood assays

- WA Health, Government of Western Australia - WADOH, Future Health WA G06302 (Eastwood et al)

Example for study using Gen2-22 year follow-up data:

We would like to acknowledge the Raine Study participants and their families for their ongoing participation in the study and the Raine Study team for study co-ordination and data collection, and The University of Western Australia Centre for Sleep Science for utilisation of the facility and the sleep study technicians. The core management of the Raine Study is funded by The University of Western Australia, Curtin University, Telethon Kids Institute, Women and Infants Research Foundation, Edith Cowan University, Murdoch University, The University of Notre Dame Australia and the Raine Medical Research Foundation. The Raine Study Gen2-22 year follow-up was funded by NHMRC project grants 1027449, 1044840 and 1021858. Funding was also generously provided by Safe Work Australia.

The Raine Study Gen1-26 year follow-up

- NHMRC (Eastwood et al, ID 1084947)
- The Centre for Sleep Science, School of Anatomy, Physiology & Human Biology, The University of Western Australia
- Lions Eye Institute

The Raine Study Gen2-27 year follow-up

- NHMRC (Mori et al, ID 1102106)
- NHMRC (Eastwood et al, ID 1109057)
- Royal Perth Hospital Medical Research Foundation

- The Heart Foundation, WA Branch
- Lions Eye Institute
- Curtin University
- School of Population and Global Health, The University of Western Australia
- School of Women's and Infants' Health, The University of Western Australia
- John Olynyk
- Jennifer Stone

The Raine Study Gen3-27 year ACRC sub-study

- Financial support for the collection of Gen3 data was provided by the Cooperative Research Centre for Living with Autism (Autism CRC), established and supported under the Australian Government's Cooperative Research Centres program.

The Raine Study Gen2-27 year online Economic sub-study

- The Agence Nationale de la Recherche (ANR) under the Labex IAST project, Maastricht University and Tilburg University.

The Raine Study Gen2-28 year follow-up

- NHMRC (Green et al, ID 1126494)
- NHMRC (Mackey et al, ID 1121979)
- The Heart Foundation (Haynes et al, 102170)

BIOLOGICAL SAMPLES

Where access to biological samples (biosamples) has been provided or biological samples assay data have been used, please acknowledge the in-kind support provided by the following institutions for biosample storage and curation.

- The University of Western Australia, School of Women's and Infants' Health, King Edward Memorial Hospital
- The University of Western Australia, Medical School, Royal Perth Hospital
- Telethon Kids Institute



One of us
could change your life