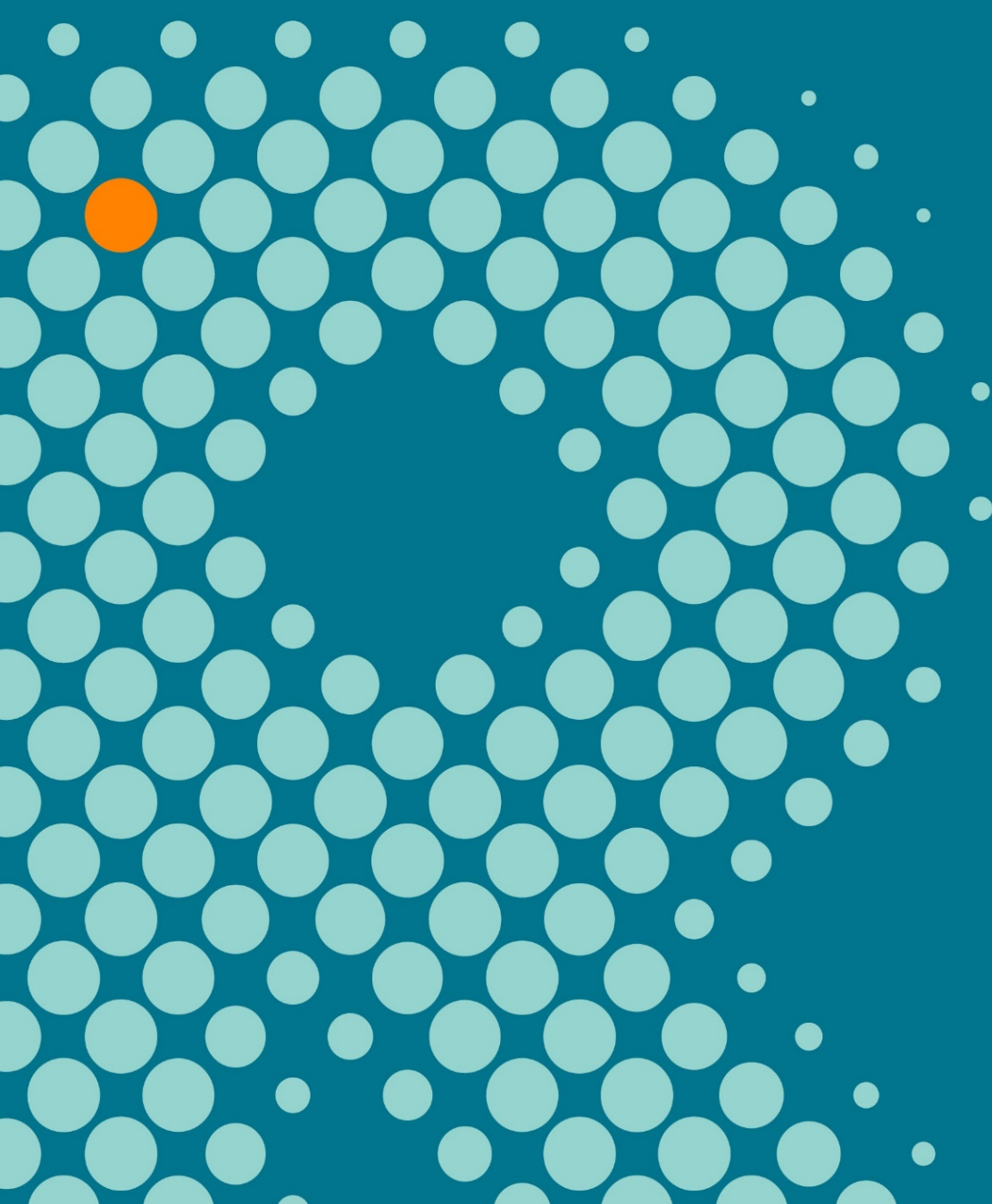
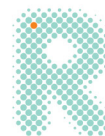


Nomenclature and Acknowledgements

The Raine Study





NOMENCLATURE GUIDELINES

When referring to the Raine Study

Whenever the Raine Study is mentioned please refer to it as “The Raine Study” (in headings and at the start of a sentence) or “the Raine Study” when in the middle of a sentence.

Example

- *“Participants of the Raine Study Gen2...”*

“Raine” and “Study” should be preceded by “the” and kept together to remain a searchable phrase, with capitalisation of both words (Raine and Study)

Please note the term ‘Western Australian Pregnancy (Raine) Study’ has been superseded and should not be used now.

When referring to the Raine Study participants

- Refer to “participants” and NOT to “subjects” or “patients”

Example:

- *“Potential participants were contacted by xxxx.”*

When referring to a particular generation: the Raine Study [Gen]

The Raine Study has become a multigenerational study. The following nomenclature has been adopted to differentiate the different generations (Gen) of participants.

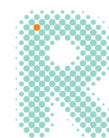
Gen0	Grandparents of the Gen2 participants / Parents of the Gen1 participants
Gen1	Mothers and partners originally recruited into the Raine Study
Gen2	The Raine Study index participants, who were born into the study (previously sometimes called “the kids”)
Gen3	Offspring of the Gen2 participants

Examples:

- *“The Raine Study Gen1 participants”*
- *“The participants from both Gen1 and Gen2 were contacted.... “*

When referring to a particular follow-up: the Raine Study [Gen]-[period/follow-up]

The Raine Study has data collected over many different occasions (i.e. follow-ups), which are differentiated by a number that refers to the average age of the index



participants (Gen2) at the time of the study (e.g. Gen1-26 year follow-up refers to a follow-up undertaken on the parents when the index participants were 26 years old).

Antenatal data collected before the birth of Gen2

Perinatal data collected at the time of Gen2 birth

1 data collection at around the first birthday of Gen2

27 data collection at around the 27th birthday of Gen2

Examples:

- *“The Raine Study Gen1 and Gen2 antenatal data examined in this paper includes maternal exercise and fetal length at 18 weeks gestation.”*
- *“The Raine Study Gen2-1 year follow-up assessment consisted of”*
- *“The Raine Study Gen1-26 year follow-up included assessment of”*
- *“Data collected at the Raine Study Gen2-27 year follow-up included”*

When referring to a particular focus within a single follow-up: investigation of [focus] in the [Gen]-[period/follow-up] of the Raine Study or investigation of [focus] in the Raine Study [Gen] at the [period/follow-up]

Examples:

- *“Investigation of eye health in the Gen2-20 year follow-up of the Raine Study...”*
- *“Investigation of cardiac risk in the Raine Study Gen2 participants at the 5 year follow-up...”*
- *“A key conclusion drawn from the investigation of bone density in participants of the Gen2-20 year follow-up of the Raine Study is that fat mass is less important for males than females.”*

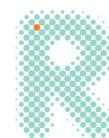
When referring to a particular focus across several follow-ups: [design] investigation of [focus] in the [Gen] of the Raine Study

Examples:

- *“Longitudinal investigation of mental health in the Gen2 of the Raine Study, intergenerational investigation on obesity involving participants from Gen1 and Gen2 of the Raine Study.”*
- *“This paper presents findings from the longitudinal investigation of mental health in the Gen2 of the Raine Study.”*

Examples of terms that should NOT be used:

RAINE study, Raine pregnancy cohort, Raine birth cohort, Raine Sedentary Behaviour Study, Raine Intergenerational Asthma Study, Raine Longitudinal Back Pain Study



ACKNOWLEDGEMENT GUIDELINES

The following paragraph must be included in ALL acknowledgements:

We would like to acknowledge the Raine Study participants and their families for their ongoing participation in the study and the Raine Study team for study co-ordination and data collection. We also thank the NHMRC for their long term contribution to funding the study over the last 30 years. The core management of the Raine Study is funded by The University of Western Australia, Curtin University, Telethon Kids Institute, Women and Infants Research Foundation, Edith Cowan University, Murdoch University, The University of Notre Dame Australia and the Raine Medical Research Foundation.

When genetics and/or epigenetics data were utilised, include the following sentence must be included in acknowledgements:

- The Pawsey Supercomputing Centre provided computation resources to carry out analyses required with funding from the Australian Government and the Government of Western Australia.

When biological samples (biosamples) were accessed or biological samples assay data have been used, acknowledge the in-kind support provided by the following institutions for biosample storage and curation:

- The University of Western Australia, School of Women's and Infants' Health, King Edward Memorial Hospital
- The University of Western Australia, Medical School, Royal Perth Hospital
- Telethon Kids Institute

The following specific funding bodies must be acknowledged if data from a particular follow-up are utilised:

The Raine Study Gen1- and Gen2-antenatal and perinatal data collections

- The Raine Medical Research Foundation

Maternal antenatal blood samples or cord blood from Gen1 and Gen2

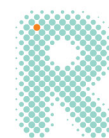
- NHMRC
- Women and Infants Research Foundation

The Raine Study Gen1- and Gen2-1, 2, 3, 5, 8, 10 year follow-ups

- NHMRC
- The Raine Medical Research Foundation

The Raine Study Gen2-14 year follow-up

- NHMRC (Sly et al, ID 211912)
- NHMRC Program Grant (Stanley et al, ID 003209)
- The Raine Medical Research Foundation



Biological specimens from the Gen2-14 year follow-up

- NHMRC (Beilin et al, ID 403981)

Spinal pain, posture data from the Gen2-14 year follow-up

- NHMRC (Straker et al, ID 323200)

DNA or GWAS data from the Gen2-14 year follow-up

- NHMRC (Palmer et al, ID 572613)
- NHMRC (Beilin et al, ID 403981)

Data from the PCOS sub-study from the Gen2-14 year follow-up

- NHMRC (Hickey et al, 403968)

Data on thyroid function from the Gen2-14 year follow-up

- Abbott Diagnostics Australia for donating immunoassay reagents for the analysis of thyroid function.

The Raine Study Gen2-17 year follow-up

- NHMRC Program Grant (Stanley et al, ID 353514)

Biological specimens from the Gen2-17 year follow-up

- NHMRC (Beilin et al, ID 403981)

Cogstate and Functional MRI data from the Gen2-17 year follow-up

- NHMRC (Foster et al, ID 458623)

Spinal pain, posture data from the Gen2-17 year follow-up

- NHMRC (Straker et al, ID 323200)

Basal HPA axis data from the Gen2-17 year follow-up

- NHMRC (Foster et al, ID 458623)
- Canadian Institutes of Health Research - CIHR (Lye et al, MOP-82893)

DNA or GWAS data from the Gen2-17 year follow-up

- NHMRC (Palmer et al, ID 572613)
- NHMRC (Beilin et al, ID 403981)
- NHMRC (Huang et al, ID 1059711)
- Canadian Institutes of Health Research - CIHR (Lye et al, MOP-82893)

Abdominal Ultrasound data from the Gen2-17 year follow up

- Gastroenterological Society of Australia, Sydney, Australia
- Fremantle Hospital, Perth, Australia

The Raine Study Gen2-18 year sub-study

Trier Social Stress Test data from the Gen2-18 year sub-study

- Canadian Institutes of Health Research - CIHR (Lye et al, MOP-82893)

The Raine Study Gen2-20 year follow-up

Nonalcoholic liver disease data from the Gen2-20 year follow-up

- NHMRC (Adams et al, ID 634445)

Nutritional data and serum 25(OH)D assays

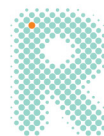
- NHMRC (Oddy et al, ID 1022134)

Risky behaviour data from the Gen2-20 year follow-up

- NHMRC (Skinner et al, ID 634509)

DXA scan data from the Gen2-20 year follow-up

- Canadian Institutes of Health Research - CIHR (Lye et al, MOP-82893)



Eye data from the Gen2-20 year follow-up

- NHMRC (Mackey et al, ID 1021105)
- Canadian Institutes of Health Research - CIHR (Lye et al)
- Lions Eye Institute
- Australian Foundation for the Prevention of Blindness
- Alcon Research Institute
- Telethon Kids Institute
- Ophthalmic Research Institute of Australia

Data from the Male fertility sub-study from the Gen2-20 year follow-up

- NHMRC (Hart et al, ID 634457)

Example for study using Gen2-20 year follow-up data:

We are grateful to the Raine Study participants and their families for their ongoing participation in the study and we thank the Raine Study and Lions Eye Institute research staff for cohort coordination and data collection. We also thank the NHMRC for their long term contribution to funding the study over the last 30 years. The core management of the Raine Study is funded by The University of Western Australia, Curtin University, Telethon Kids Institute, Women and Infants Research Foundation, Edith Cowan University, Murdoch University, The University of Notre Dame Australia and the Raine Medical Research Foundation. The eye data collection of the Raine Study Gen2-20 year follow-up was funded by NHMRC Grant 1021105, Ophthalmic Research Institute of Australia (ORIA), Alcon Research Institute, Lions Eye Institute and the Australian Foundation for the Prevention of Blindness. The NHMRC project grant 1022134 funded the serum 25(OH)D assays that were conducted by RDDT in Melbourne Victoria, Australia.

The Raine Study Gen2-22 year follow-up

- The Centre for Sleep Science, School of Anatomy, Physiology & Human Biology, The University of Western Australia

Asthma data from the Gen2-22 year follow-up

- NHMRC (Hall et al, ID 1021858)

Sleep data from the Gen2-22 year follow-up

- NHMRC (Eastwood et al, ID 1027449)

Sedentary behaviour and physical activity data from the Gen2-22 year follow-up

- NHMRC (Straker et al, ID 1044840)

Work data from the Gen2-22 year follow-up

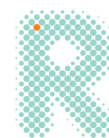
- Safe Work Australia

Blood assays from the Gen2-22 year follow-up

- WA Health, Government of Western Australia - WADOH, Future Health WA G06302 (Eastwood et al)

Example for study using Gen2-22 year follow-up data:

We would like to acknowledge the Raine Study participants and their families for their ongoing participation in the study and the Raine Study team for study co-ordination and data collection. We acknowledge The University of Western Australia Centre for Sleep Science for utilisation of the facility and the sleep study technicians. We also thank the NHMRC for their long term contribution to funding the study over the last



30 years. The core management of the Raine Study is funded by The University of Western Australia, Curtin University, Telethon Kids Institute, Women and Infants Research Foundation, Edith Cowan University, Murdoch University, The University of Notre Dame Australia and the Raine Medical Research Foundation. The Raine Study Gen2-22 year follow-up was funded by NHMRC project grants 1027449, 1044840 and 1021858. Funding was also generously provided by Safe Work Australia.

The Raine Study Gen1-26 year follow-up

- NHMRC (Eastwood et al, ID 1084947)
- The Centre for Sleep Science, School of Anatomy, Physiology & Human Biology, The University of Western Australia
- Lions Eye Institute

The Raine Study Gen2-27 year follow-up

- NHMRC (Mori et al, ID 1102106)
- NHMRC (Eastwood et al, ID 1109057)
- National Heart Foundation (Mori et al, ID 102301)
- Cancer Australia (Stone et al, ID 1147677)
- Royal Perth Hospital Medical Research Foundation
- The Heart Foundation, WA Branch
- Lions Eye Institute
- Curtin University
- School of Population and Global Health, The University of Western Australia
- Division of Obstetrics and Gynaecology, The University of Western Australia
- John Olynyk

The Raine Study Gen2-27 year Lumbar MRI sub-study

- Department of Health WA (Smith et al)

The Raine Study Gen3-27 year Autism CRC sub-study

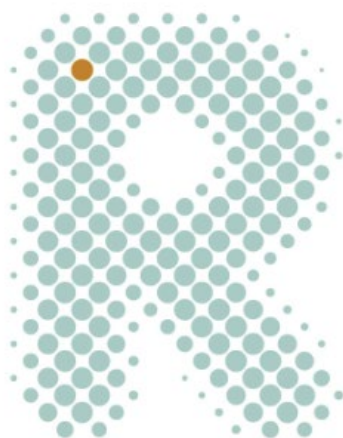
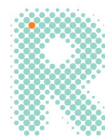
- Financial support for the collection of Gen3 data was provided by the Cooperative Research Centre for Living with Autism (Autism CRC), established and supported under the Australian Government's Cooperative Research Centres program.

The Raine Study Gen2-27 year online Economic sub-study

- The Agence Nationale de la Recherche (ANR) under the Labex IAST project, Maastricht University and Tilburg University.

Gen2-28 year follow-up

- NHMRC (Green et al, ID 1126494)
- NHMRC (Mackey et al, ID 1121979)
- The Heart Foundation (Haynes et al, 102170)



the
Raine
Study

One of us
could change your life